

WELCOME!

Post-16 Awareness Information Evening

The Beaminster & Colfox Joint Sixth Form

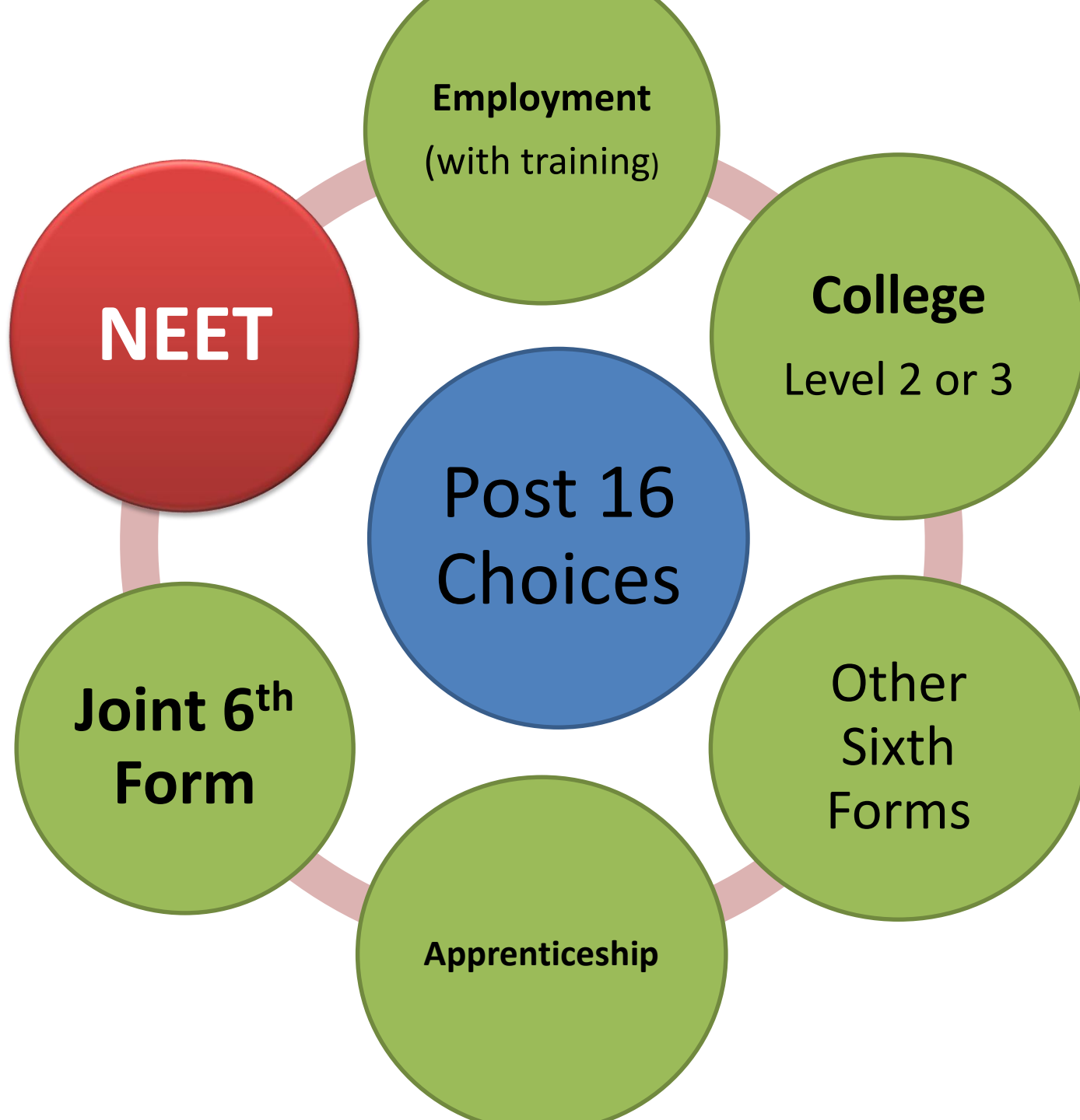
Tuesday 1st July, 2025 6pm





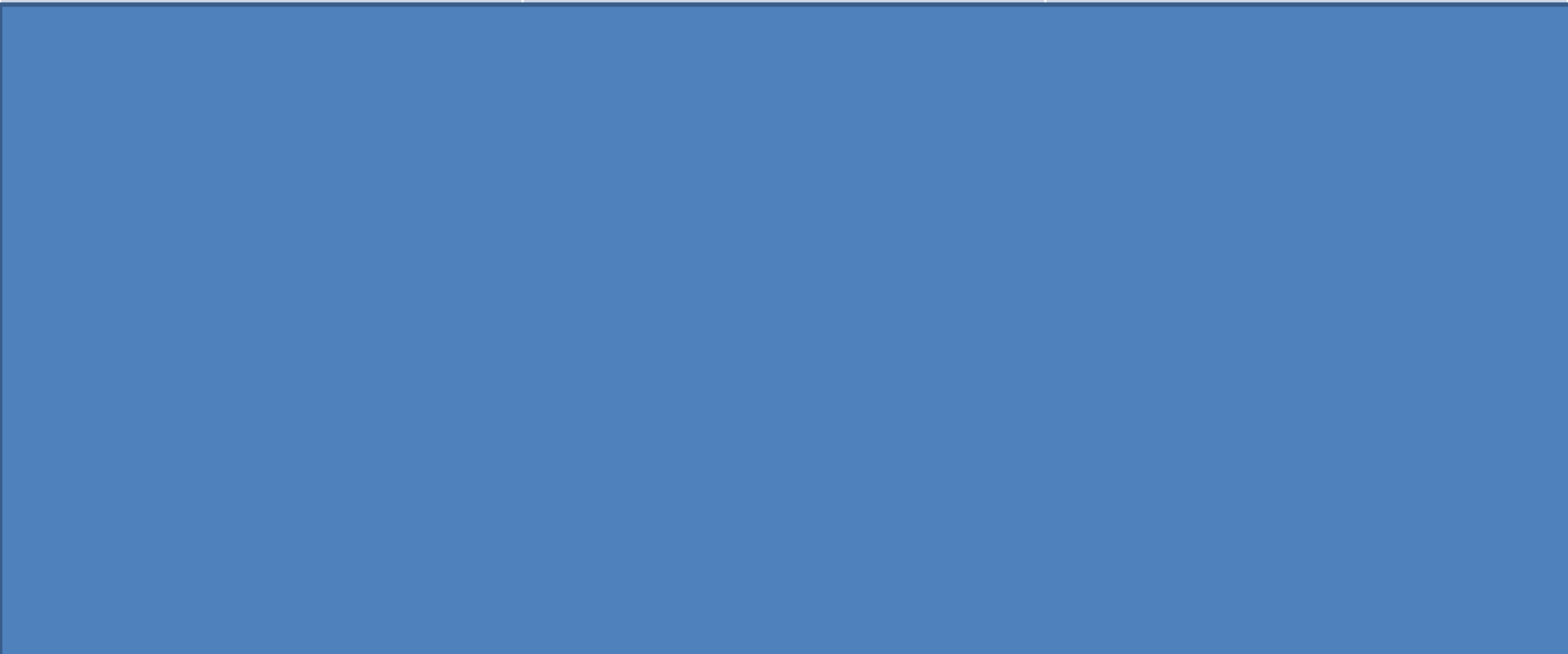


The aims of the day were:

- In less than **12 months** time students will **have completed their GCSEs!**
- Some big decisions have to be made... *and today was designed to help them decide.*
 - Which **pathway** is right for you?
 - What **courses** might you choose?
 - What are your Beaminster / Colfox peers *really* like?



Your current situation	Courses and levels to consider	What this can lead on to
<p>You are predicted to get some GCSEs, but mostly 1 - 3</p> 	<p>Level 1</p> <p>Local colleges offer:</p> <ul style="list-style-type: none">ElectricalPlumbingConstructionHospitality (etc.) 	<p>This usually leads on to Level 2 study.</p> <p>Level 1 can also lead into apprenticeships</p>



**Your current
situation**

**Courses and levels
to consider**

**What this can lead
on to**

You are likely to get
some GCSEs, but less
than 5 at 9 - 5



Level 2

Local colleges offer vocational
courses, as with Level 1

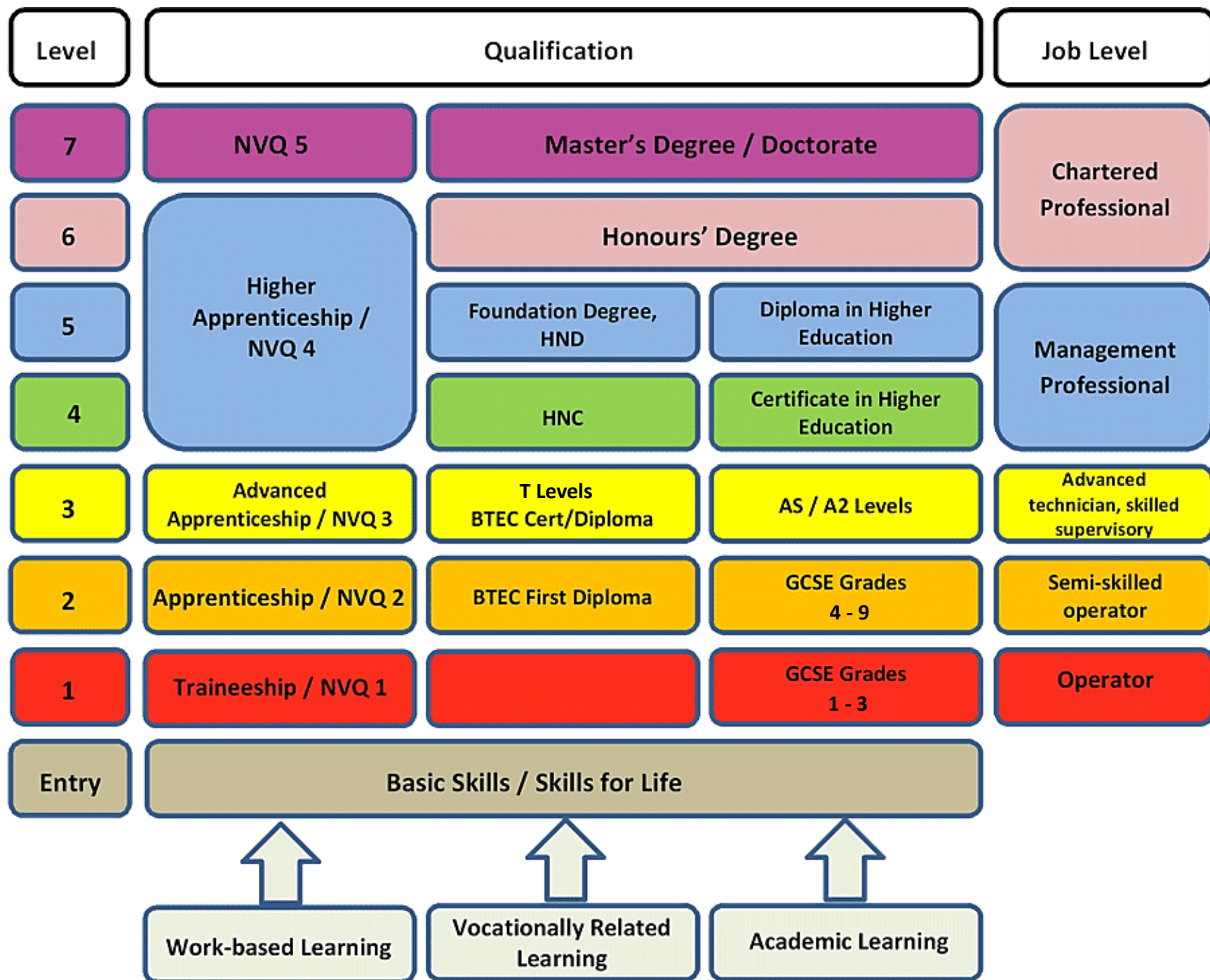
Also,
**BTEC Sport or Foundation
pathway** in the Joint Sixth



L2 can lead on to L3 (which is
the same as A Levels)

Your current situation	Courses and levels to consider	What this can lead on to
You are likely to get at least 5 GCSEs, at 9 - 5	Level 3 Usually used to describe academic courses studied in the Sixth Form/college	Often leads on to University Can lead on to Higher Apprenticeships and Degree Apprenticeships

Your current situation	Courses and levels to consider	What this can lead on to
You are predicted to get some GCSEs, but mostly 1 - 3	Level 1 Local colleges offer: Electrical Plumbing Construction Hospitality (etc.)	This usually leads on to Level 2 study. Level 1 can also lead into apprenticeships
You are likely to get some GCSEs, but less than 5 at 9 - 5	Level 2 Local colleges offer the above Also, BTEC Sport or Foundation pathway in the Joint Sixth Form	L2 can lead on to L3 (which is the same as A Levels)
You are likely to get at least 5 GCSEs, at 9 - 5	Level 3 Usually used to describe academic courses studied in the Sixth Form	Often leads on to University Can lead on to Higher Apprenticeships and Degree Apprenticeships





College Route

- **College courses are changing**
- Students used to choose from a range of BTECs, diplomas, certificates and other qualifications...
- This was quite confusing!
- **There is now a single qualification** that most vocational students will follow:

T-LEVELS

THE NEXT **T** LEVEL QUALIFICATION

What are T-Levels?

- 'T-Level' stands for 'Technical Level'
- Aim to replace BTECs, Diplomas, certificates, etc.
- They are a two-year course
- T-Levels launched in 2020 and will be fully implemented by 2029
- One T-Level is the equivalent to 3 A Levels
- 45 days are spent on work placement. Therefore, a T-Level is 80% classroom and 20% work based
- T-Levels lead in to paid work, higher (or degree level) apprenticeships or university
- T-Levels are graded Pass; Merit; Distinction; Distinction*

What T Level routes are available?

1. **T Level transition (1 yr.)**
2. **Digital Route (data, coding, networks, systems, etc.)**
3. **Construction and Built Environment** (construction, engineering, heating, design, etc.)
4. **Education and Childcare** (Education and Childcare (EYFS, playworker, TAs, Learning Mentor, etc.)
5. **Health and Science** (ambulance, dental, healthcare assistance, radiography, lab work, etc.)
6. **Legal, Financing and Accounting Route** (accounting, payroll, mortgages, insurance, banking, pensions, etc.)
7. **Business and Admin Route** (clerk, office admin, secretary, civil service, PA, etc)
8. **Engineering and Manufacturing Route** (CAD, 3D, motor, body repair, breakdown, telecoms, marine, blacksmithing, welding, boats, electrical engineering, etc)
9. **Hair and Beauty** (barber, hair, beauty, makeup, etc.)
10. **Catering and Hospitality (available soon)**
11. **Creative and Design Route** (jewellery, furniture, restoration, tailor, fashion, dressmaking. ALSO – **Media, Broadcast, Production** (sound engineer, AV, director, lighting, stage hand, video, camera, production, etc.)
12. **Agriculture, Environmental and Animal Care Route** (farming, tree surgery, countryside officer, landscaping, arboriculture, contractor, etc. ALSO, Animal Care and Management (zoo, canine, equine, care, training etc)

Academic (or Sixth Form) Route

- Sixth Forms (including our own very successful Joint Sixth Form) will offer a 'blended approach' to study
- A purely 'academic' pathway involves taking 3 'A Levels' (this is a Level 3 'advanced' qualification)
- Vocational qualifications still exist in routes that are not covered by T-Levels. These are BTEC Sport, Performing Arts and some others

What Can You Expect from an A Level?

- **Almost 100% exams** (coursework, if any is usually limited to 20%)
- **No exams in Year 12**
- **A lot of written work for most courses**
- An expectation of **independent study**
- A stepping stone for further academic study (usually at university)

Our Courses (A Level)

- **Art and Design**
- **Ancient History (AS)**
- **Biology**
- **Business Studies**
- **Chemistry**
- **Computer Science**
- **Core Maths**
- **Drama and Theatre**
- **Design**
- **English Language**
- **English Literature**
- **EPQ**
- **Film Studies**
- **French**
- **Further Maths**
- **Geography**
- **History**
- **Maths**
- **Music Technology**
- **Philosophy and Ethics (RS)**
- **Photography**
- **Physical Education**
- **Physics**
- **Psychology**
- **Sociology**
- **Spanish**

What Can You Expect from a **BTEC**?

- No exams (or hardly any)
- **100% coursework** and continual assessment
- **Work experience** and practical components
- Chance to progress to university and apprenticeships
- Some written requirement

Our Courses (BTEC)

- **Sport** (Extended Diploma, equivalent to 3 A levels)
- **Sport** (National Diploma, equivalent to 2 A levels)
- *We may consider offering other courses in the future*

Our Other Courses

- Core Maths
 - EPQ (Extended Project Qualification)
 - Further Maths
 - Ancient History AS
 - Food enrichment
 - Financial Studies
-
- GCSE English and Maths for those students needing a grade '4' in either

Apprenticeship Route

- As an apprentice, you are an **employee** with all the **statutory rights**
- You are paid an **apprentice salary** (currently £7.55 an hour, *minimum*)
- You spend **one day a week at college** (or equivalent) working towards a **qualification**
- Your **qualification** depends on the level of apprenticeship you take on

Apprenticeship Route

There are different levels of apprenticeships:

- **Intermediate** (L2) – available after GCSEs.
- **Advanced** (L3) – available after GCSEs. You will need higher grades
- **Higher** (L4 and L5) – after school or college Level 3 qualifications (A Levels, BTECs, T Levels, etc.)
- **Degree** (L6 and L7) – again, after L3 qualifications.

Apprenticeship Route

- The main difference between college / school and apprenticeships is **the fact that this is a real job**
- **Employer expectations** require commitment, dedication, hard work and reliability
- You will need to find, apply and secure your own apprenticeship
- **This means writing a CV, attending interviews and doing your research**

Apprenticeship Route

You can find apprenticeships via

- UCAS
- Local newspapers
- Word of mouth
- www.gov.uk
- www.notgoingtouni.co.uk
- www.findapprenticeships.co.uk

Find an apprenticeship

Search and apply for an apprenticeship in England

Search

Keywords (optional)

Can include job title, employer or reference number

All ▾

Your location

Enter postcode, town or city or [use current location](#)

DT6 3DT

Within

5 miles ▾

Help

[? How to search for an apprenticeship](#) (interactive walkthrough)

0800 015 0400

[Contact us](#)

[Coronavirus \(COVID-19\): read our guidance for apprentices](#)

[About apprenticeships](#)

44 results found

Filter

Selected filters

[Clear](#)

Where

Beaminstor, Dorset (within 10 miles) X

[Sign in to create an alert for this search](#)

What

Enter a job or company

Where

Enter a city or postcode

[Open map](#)

Sort results

Distance



[Equine Groom Apprenticeship](#)

Jabeena Maslin Equestrian
BEAMINSTOR (DT8 3HD)

Distance 1.7 miles

Start date 10 August 2025

Training course Equine groom (level 2)

Wage £15,704 a year

Closes in 29 days (Wednesday 30 July 2025 at 11:59pm)

Posted 5 June 2025

[Sheet metal Fabrication Apprentice](#)

ACKERMAN ENGINEERING LTD
BRIDPORT (DT6 3UX)

Distance 4.4 miles

Start date 1 September 2025

Training course Metal fabricator (level 3)

Wage £15,311.40 a year

Closes in 31 days (Friday 1 August 2025 at 11:59pm)

So, essentially you have the following **FIVE options:**

1. Studying for L3 (A Levels) in the **Joint Sixth Form**.
2. Studying for L3 BTEC (Sport) in the **Joint Sixth Form**, perhaps blended with A Levels
3. Studying L1, L2 or L3 courses at local colleges
4. Getting an **apprenticeship** or **employment with training**
5. Attending another college or Sixth Form

A caveat...

- A place in the Joint Sixth Form is **always conditional**
- This means **you need to get the minimum grades required to gain a place**
- **You will need at least 5 GCSEs at '5' for A Levels**
- **Subjects** have their own minimum required grades (usually, a '5' but sometimes higher)
- It is now **up to you** to get the very best grades you can and ***demonstrate effort***.

Joint Sixth Form Open Evening

November 2025

- You will receive more information about this event
- Chance to see a wide range of courses
- Able to ask questions and seek advice

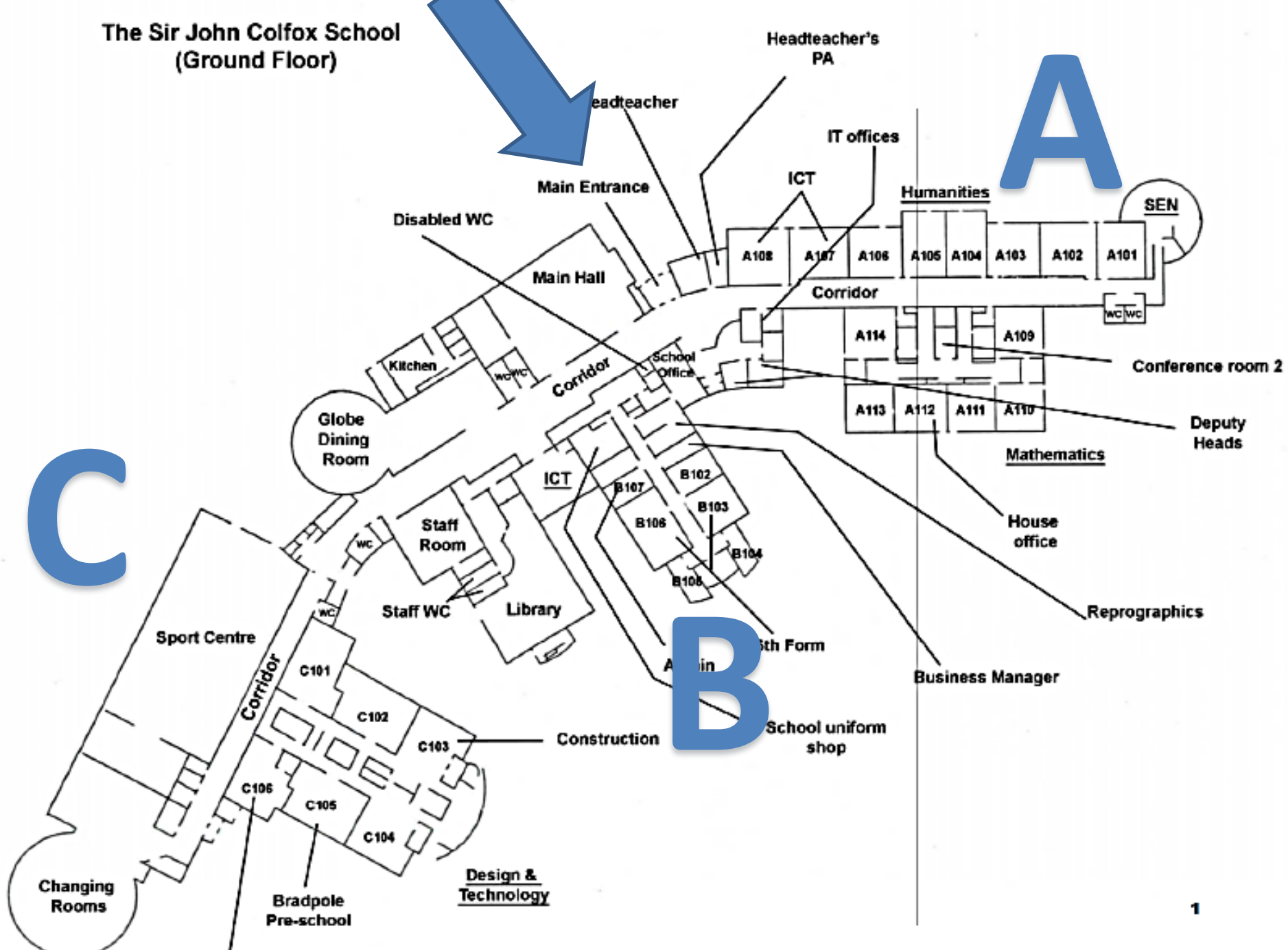
Beaminster Site



Sixth Form
Centre

We are here

The Sir John Colfox School (Ground Floor)





Any Questions