

Beaminster School

Uniform and Appearance Policy

2026 - 2027



Introduction

All items of uniform are available from our on-line supplier www.kitzuk.co.uk. School crested items are only available through the school supplier.

However, if you do purchase other items from high-street retailers, please check that the style and cut is exactly the same as those available from our school suppliers. These are the only style/cut we will accept.

In an effort to assist parents and students, we have produced this detailed policy, which we will continue to update and circulate each term, to assist parents/carers in making the most appropriate in-year uniform purchases and to ensure that all haircuts/styles and piercings are appropriate for school.

Please be mindful that the 'Back to School' market is one that many manufacturers and high street retailers exploit, simply because it is such a profitable industry with a huge client base. Selling items that appeal to youngsters, but that don't actually comply with school uniform policies has become a significant issue over recent years, for both parents and schools. Therefore, **please read this policy in its entirety to ensure you aren't in the position of having to replace newly purchased items because they fall outside of what we, and many other schools, will accept.**

Students eligible for Pupil Premium will receive a Kitz voucher to support the cost of the compulsory uniform items. We also hold a small stock of pre-loved uniform items that are available to all families for a custom donation, please do contact the office for further details about this.

Please do remember to **clearly and permanently mark all uniform and belongings** with the owner's name.

Why we have uniform

We have a school uniform because it promotes equality and a sense of pride and belonging in our school community. It sets clear expectations for how our students present themselves, and supports a calm, focussed learning environment. Our uniform is recognised locally as one of the best for smartness and high standards, and maintaining this reputation is important for who we are as a school and what we stand for.

Learning

School should be a place where youngsters concentrate on their learning. Unfortunately concerns over fashion and body image can become a major distraction. Image has always been important to most teenagers and we would always wish to encourage our students to take pride in their appearance.

However, many schools have become increasingly concerned about the sexualisation of young people through inappropriately worn and/or tailored items of uniform such as figure-hugging or short skirts and skinny/tight trousers. There have been many articles in the press regarding this, including schools that have banned skirts altogether. At Beaminster we have chosen to offer choice within an agreed range.

Parental Support

As a good percentage of our staff are also parents, we do appreciate the difficult, unpopular and sometimes painful decisions you have to make in shops when selecting replacement uniform. We know that most parents will remember the same battles they had with their parents!

Ensuring your child leaves the house dressed appropriately is not always easy, but it does make things so much easier for them, you and us when students arrive at school in the correct uniform.

We need your support in keeping our uniform standards high and ensuring that we can all have a positive start to the day.

Policy Summary

There are four compulsory items of school uniform that **must** be Beaminster School crested and can only be purchased from Kitz.

1. **School coat**
2. **V-neck school jumper**
3. **House tie**
4. **School PE top.**

There are other optional school crested items available from Kitz if parents wish to buy them, there is no additional cost for school crested items.

Any non school crested uniform items may be purchased elsewhere, but please note that **all items must match the exact style specified in this policy.**

On a daily basis, all students are required to wear to school:

- a standard plain white long sleeved shirt, buttoned to the neck
- clip-on house tie
- school crested black V-neck jumper
- standard black trousers or knee-length pleated black skirt
- black socks
- traditional/formal style black school shoes
- school crested coat (worn outside when cold/wet or on a trip).

In the Summer Term only, short sleeved shirts and tailored, knee length shorts may be worn.

PE Kit Essential Items

- White school crested PE top from Kitz (boys)
- Black school crested PE top from Kitz (girls)
- Plain black hoodie or sports jumper
- Black shorts (loose fit only) or skort
- White trainer socks (indoor sports)
- Trainers – suitable for indoor use (non-marking soles) and outdoor use (court/track/field)
- Reversible black and white rugby / hockey shirt
- Black and white hooped sports socks (outdoor sports)
- Boots – with aluminium studs for rugby
- Gum shield and shin pads

PE Optional Items

- Black school crested sports hoodie
- Plain black tracksuit bottoms (no zips)
- Black cycling shorts (worn under shorts)
- Boot bag
- Kit bag
- ¾ leggings

Like most schools, we do not accept students wearing trainer-style shoes; white socks; excessive make-up (or any make-up for students in Years 7 and 8); false and/or painted nails or eye-lashes; any form of adornment/decoration on the fingers, wrists or neck; any form of facial or body piercing (other than a single piercing in each earlobe); any elaborate hair bands or inappropriate headwear; any fake tan.

Skirts, shirt sleeves and jumpers must not be rolled-up. Shirts must be tucked-in and the tie worn at all times, securely fastened over the top button of a fully-buttoned-up shirt.

The school jumper must be worn at all times (excluding the Summer Term). PE Hoodies should only ever be worn in PE lessons and/or at sporting events, not around school or on the way home or into school.

The school coat serves as a practical alternative to a traditional blazer and is a compulsory item of uniform for all students. No other coat should be worn at any time during the school day, including travelling to and from school.

Hair should not contain any form of dye, be considered extreme in style, length or decoration and must not contain patterns or contrasting grades of cut. Boys should remain clean shaven.

Uniform and Appearance Policy Summary

Thank you for helping to maintain our high standards of appearance

Failure to adhere to this policy will result in a detention in the first instance and additional consequences thereafter

Appropriate Skirt and Trousers Length



Knee length pleated skirt



No shorter than **2 inches** above the Knee



Trousers touching the top of the shoe



Jewellery

Nothing around fingers/wrists/neck

No nose studs or any other piercings - other than one single small stud/sleeper in each ear lobe only



Shirt and Tie



Tie clipped onto top button and shirt tucked in



Make-up/Decoration



No Make-up in Years 7 and 8
Discreet make-up in Years 9,10,11
No false or painted nails
No false eyelashes or fake tan
 Hair ties/bands/scrunchies should be **black and plain**

Hair

Hair must not be dyed, contain patterns or lines or considered extreme in style/fashion



Styles are not to contain significantly different grades of hair length
 Boys are to remain clean-shaven
 Eyebrows must not contain shaved lines
 Hair over shoulder-length should be tied-back with a small, black, plain hair tie/band/scrunchie (when required/requested to)

Jumpers On at all times



School Coat ONLY



Black traditional-style school shoes only

No 'hybrid' or trainer-style shoes of any type



Shirt and Tie

**Plain white shirt, stiff pointed collar, long sleeved, buttoned to the neck.
The appropriate house tie (only available from our school supplier).**

The shirt is to be 'formal', standard/school, cotton/polyester type (not flannel or linen etc).
Top button must be done up, shirt tails/bottom tucked into trousers/skirt at all times, sleeves rolled down.
The clip-on tie is to be worn at all times, clipped onto the top button and worn at the appropriate length/style. Its fixed construction/design should not be altered in any way.

Undergarments should not be visible beneath shirt (i.e. a plain white T-shirt with no logos to provide additional warmth/protection is acceptable as long as the V-neck jumper is also worn).
Tailored, short sleeved shirts are optional for the Summer Term only.
It is not acceptable to just roll long sleeves up.



YES 😊



YES 😊



NO 😞

Long sleeves rolled up

V-neck jumper with school crest

Black, school V-neck jumper with crest (only available from our school supplier)

Jumpers must be worn at all times (except during the Summer Term) and must not be tucked in to skirts or trousers, or be rolled-up to look like it is tucked in.
The sleeves of the jumper must not be rolled up at any time.
No other jumpers or alternative tops are allowed (e.g. hoodies, sweatshirts, gilets or cardigans etc).



Yes 😊



Yes 😊



No 😞

Jumper tucked into skirt or rolled-up
(+ non-pleated skirt + too short)



No 😞

Sleeves rolled up

Standard School Trousers/Skirt

Plain black full-length standard school trousers or

Plain black knee-length pleated skirt (trousers and skirts can be purchased from Kitz).

The standard pleated school skirt is the only skirt accepted. No other style or variant is permitted.

The skirt must be knee length i.e. no shorter than 2 inches above the top of the knee, no longer than mid-calf length.

Skirts must not be rolled-up at any time.

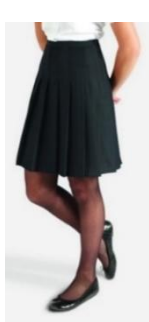
Standard school trousers must not be tight, excessively flared, long/short/skinny, rolled-up or considered extreme in fashion.

The bottom of the trouser should be long enough to rest on the top of the shoe when standing.

No jeans or denim-type material, chinos, cords, leggings, shorts, multi-pocketed or combat style are permitted.

Belts are to be black and max of 5cm wide with a small, discreet buckle.

Tailored, knee length shorts are optional in the Summer Term only.



😊 YES

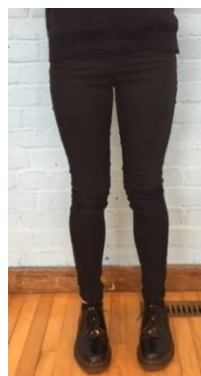
Pleated Skirt - worn at the correct length

😊 YES

Girls Trousers
Tailored, knee length shorts
(Shorts are optional for the Summer Term ONLY)

😊 YES

Boys Trousers
Tailored, knee length shorts



😞 NO

Jean Style

😞 NO

Unpleated + Short + Tight

😞 NO

Too short

😞 NO

Too tight

Shoes, Socks and Tights

Black leather, polishable, formal/traditional style of school shoe of a safe and supportive style.

NO style of hybrid shoe or non-formal shoe is permitted (please see examples on the next page)

Trainers, skate shoes (Nike/Vans etc) suede shoes, boots of any type, canvas or ballet style, sling back, or open toed shoes are not appropriate for school and should **not** be worn.

Lace-up shoes are preferred over velcro-straps and slip-ons.

Heel height should not exceed 3cm, with a sensible sole appropriate for all indoor and outdoor floor surfaces.

Socks should be plain black and of standard length (base of calf).

Socks are not to be worn over tights.

Tights to be plain black, not patterned or textured. Any form or style of legging is not permitted.

Trainers may only be worn when taking part in a sporting activity.

Shoe Requirements – Traditional style, formal school shoes only



☺ YES

☺ YES



☹ NO boots



☹ NO canvas



☹ NO skate shoes



☹ NO sling-backs



☹ NO – ‘Hybrid’ trainer shoe type/style footwear of any kind



Coat and Outdoor Garments (scarves, hats, gloves, bags etc)

The school crested, reversible coat/fleece ONLY.

No other coat/jacket is permitted.

All students are expected to have a school coat. It will be required for going on any school trip or visit and for use around the school site and the journey to and from school, and is only available from our school supplier.

School caps, beanies and scarves are available from our school supplier, and any non-school gloves/ hats/scarves should be plain and dark in colour (preferably black). Any scarves must be straight ‘college’ style only (no large pashmina types permitted).

Appropriate bags for school are available from our school supplier. Any non-school bags should preferably be dark in colour (with reflective strips) and must be appropriate for school use e.g. rucksack style, no ‘fashion’ handbags.

Jewellery

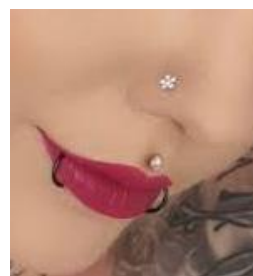
One pair of plain studs or sleepers (one in each earlobe) and a plain wrist watch is all that is allowed. Nothing should be worn around the fingers, wrists or the neck.

Studs or sleepers to be worn in the ear lobe only (not in the upper, side or inner parts of the ear). Sleepers are to be no larger in size than a 5p coin and no other ‘dangly’ earrings, stretchers, bars or any other type/style of earring is allowed.

No other rings, bands, necklaces, bracelets, bangles, visible piercings (e.g. nose/lip/eyebrow/tongue studs or rings) or ‘decoration’ is permitted (and may not simply be covered with a plaster or a clear stud used). ‘Hidden’ piercings may need to be removed for PE for safety.

All new piercings must take place in the summer holidays to allow the necessary healing to take place and so that they can be safely removed for PE lessons. Any piercing (other than the lobe of the ear) that takes longer than the length of the summer holiday to heal are not permitted.

Piercings



☺ **YES** – small sleeper/stud in the lobe

☹ **NO** – other piercings of any kind

Hair and Make-up

Hair is to be tidy, of 'business-like' appearance and natural in colour ie. not dyed.

No make-up is allowed for Years 7 and 8.

Discreet, natural looking make-up only for Years 9, 10 and 11.

Nail varnish, false nails or eyelashes are not allowed.

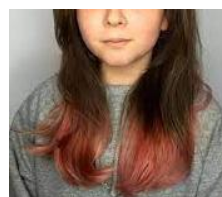
Hair must not be extreme in style/length/decoration, contain patterns, unevenly shaved areas, lines or any colouring.

Eyebrows must not contain any shaved lines.

Boys must remain clean shaven.

Fake eyelashes are not permitted nor is the wearing of fake tan.

Hair bands/ties/scrunchies (including any headcoverings) are to be small, black, plain and discreet.



☺ **YES**

☹ **NO** – heavy make-up, nail varnish, dyed/patterned/extreme hair

For Years 9-11 ONLY
(must be discreet)

Your Views

As ever, we are always happy to hear your views on all matters to do with our uniform and appearance policy. However, maintaining high standards of uniform and appearance is non-negotiable, for all the reasons outlined above.

We therefore hope we can rely on your support to ensure our youngsters comply with the requirements as set out in this uniform policy. If there is any reason why you feel you are unable to do this, then please contact us at school and we will be more than happy to assist in any way we can.